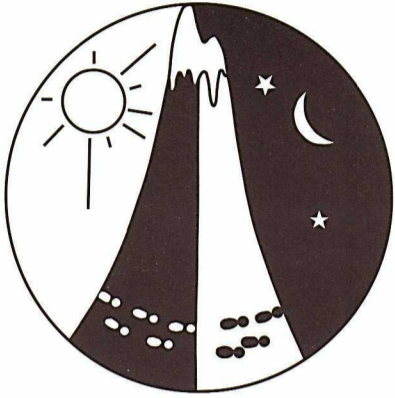


T...B...A... Rogaine

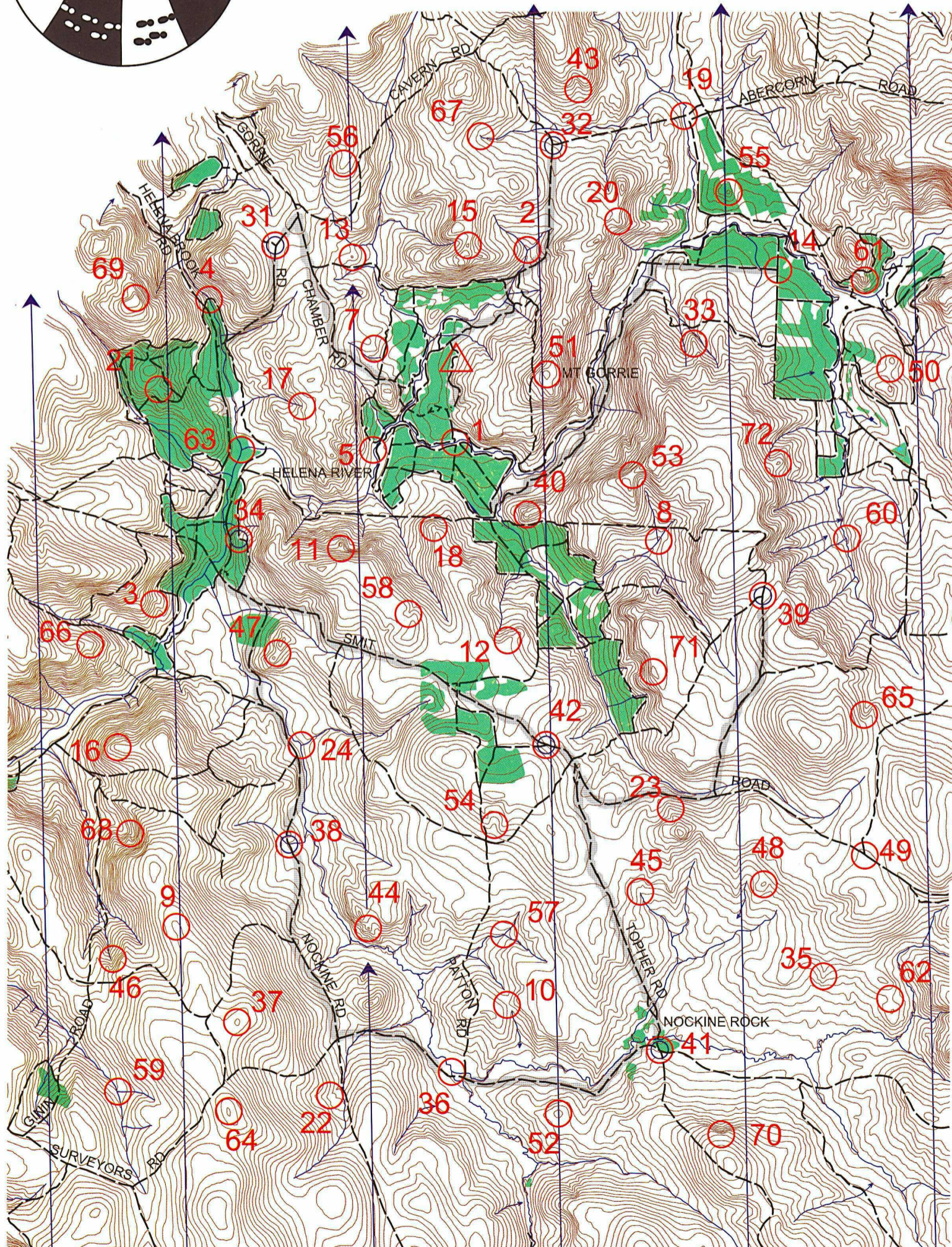
Spring 12 Hour Rogaine 4th November 2006



Western Australian Rogaining Association Inc.,
PO Box 1201, Subiaco, WA, 6904



Supported by Mountain Designs
Claremont and Fremantle stores.



Setters & Veters

Joe Courtney
Ashley Carruthers
Patrick Tremlett
Bill Baxter
Carol Baxter
Sue Joyce

Leaders

Hash House: Jon Pearce
Administration: Margaret Werner

Thanks

to Kym Pearce of the Department
of Environment and Conservation

SCALE 1:50,000, 5 metre contour interval
0 1km 2km 3km

LEGEND

Control	
Contours	
Patrolled Road	
Pine plantation	
Hash House	
Magnetic North Line	
Track or Road	
Watercourse	
Water Drop	
Continuations	

This map was produced using OCAD 9 by the Western Australian Rogaining Association, wa.rogaine.asn.au.
Data supplied by DLI and used under copy licence 393/93. Possession of this map does not give right of entry to this area.

